

Going out

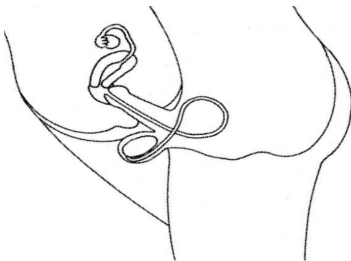
Holding
hands brief
hugs

Arms around
each other

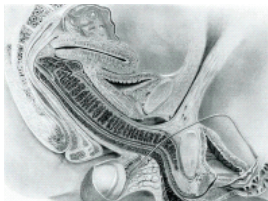
Kisses on
lips



A (E4



Line drawing



Magnetic Resonance Image

Permanent Commitment
Penetrative vaginal intercourse

B
E4 S1)

Serious

Prolonged intimate kissing using tongues.
Touching to give pleasure and excitement.
Perhaps brief intimate touching inside clothes.



C (E4



D
(E4
S1)

Flirting

Noticing that someone is physically attractive.

Holding long eye contact.

Interested and paying attention to each other.

"Accidental" physical contact with each other.

Friendly kisses.



E (E4

**Very serious
committed**

Rubbing against
each other or
massage of sexual
areas to cause
maximum sexual
pleasure, even
orgasm - inside or
outside clothes.
Contact between
mouth and sexual
areas.



Steady

Kissing
intensely,
sometimes using
tongues
Longer,
stronger hugs
Deliberate
touching outside
clothes

F (E4 S1)