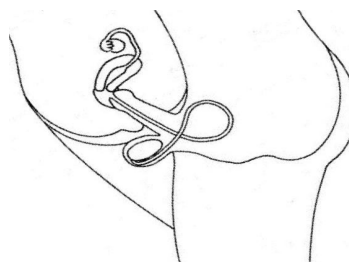


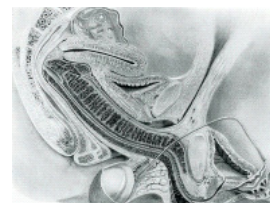
Going out
Holding hands brief hugs
Arms around each other
Kisses on lips



A (E4 S1)



Line drawing

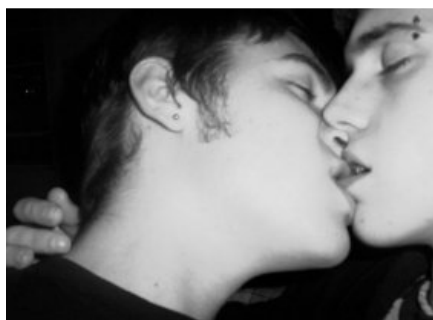


Magnetic Resonance Image

Permanent Commitment
Penetrative vaginal intercourse

B (E4 S1)

Serious
Prolonged intimate kissing using tongues.
Touching to give pleasure and excitement.
Perhaps brief intimate touching inside clothes.



C (E4)



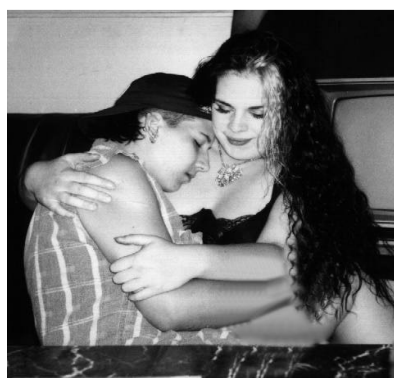
D (E4 S1)

Flirting
Noticing that someone is physically attractive.
Holding long eye contact.
Interested and paying attention to each other.
"Accidental" physical contact with each other.
Friendly kisses.



E (E4 S1)

Very serious committed
Rubbing against each other or massage of sexual areas to cause maximum sexual pleasure, even orgasm - inside or outside clothes.
Contact between mouth and sexual areas.



F (E4 S1)

Steady
Kissing intensely, sometimes using tongues
Longer, stronger hugs
Deliberate touching outside clothes